



# A leader in water treatment & environmental solutions

If you use water, then Waterman Environmental can help you  
meet legislation, exceed standards  
& save money

## ACOP L8

RISK ASSESSMENT - RISK MANAGEMENT

RISK PREVENTION - RECORD KEEPING AND MONITORING

RESPONSIBILITY ALLOCATION - REVIEW



LEGIONELLA  
CONTROL ASSOCIATION

A WATERMAN ENVIRONMENTAL GROUP COMPANY



## COOLING TOWERS & EVAPORATIVE CONDENSERS

Without correct water treatment Cooling Towers and Evaporative Condensers can suffer from corrosion, scale deposition, general fouling, bacterial fouling, and bacteriological disease proliferation such as Legionellosis. To ensure that correct parameters are maintained Waterman Environmental Services provides a water treatment regime supported by services including regular monitoring, dosing, storage, & control equipment, and physical cleaning.

PRODUCTS & SERVICES - Legionella Risk Assessment / Training / Record Keeping Systems / Consultancy Services / Cleaning & Disinfection / Pre-Treatment / Chemical & Non Chemical Treatment Programmes / Redox, Conductivity, and Proportional Dosing Control Systems / Microbiological Sampling / Legionella Testing / Monitoring & On-site Analysis

LEGALISATION / STANDARDS - HSC - ACOP L8, Health & Safety at Work Act, COSHH, BACS / WMS Code of Conduct, ISO 14001, ISO 18001, ISO 19001, UKAS, ISO 11731:1998



## AIR HYGIENE

Air quality in the work environment must be managed correctly to ensure that the risks of disease and fire are minimised. Neglect of air quality can cause dramatic, and expensive problems in hospitals, offices, factories, and residential complexes. The presence of excessive debris and contamination can result in unhygienic conditions leading to sickness, or more serious illnesses. Litigation can result from the presence of some bacterial and specific fungal infections. A programme of monitoring, inspection, cleaning by Waterman Environmental Services can avoid all associated problems.

PRODUCTS & SERVICES - Air Hygiene Risk Assessment / Legionella Risk Assessment / Remedial Works / Access Panel Installation / Low Risk System Design & Installation / Pre Commission Cleaning / Training / Record Keeping Systems / Consultancy Services / Cleaning & Disinfection / Air Quality Sampling / Microbiological Sampling / Legionella Testing

LEGALISATION / STANDARDS - HSC - ACOP L8, EH 40, BS 6700 Rev 1, HVAC, BISRIA, Health & Safety at Work Act, COSHH, ISO 14001, ISO 18001, ISO 19001

## HEATING & CHILLED WATER SERVICES / DOMESTIC HOT & COLD WATER SERVICES

Provided that a closed heating or chilled water system has been properly pre-commission cleaned, correct levels of corrosion protection can be readily achieved. The correct additions of specific biocides will ensure that harmful bacterial infections such as Pseudomonas are avoided, following pre-commission cleaning by Waterman Environmental Services The company provides a programme of monitoring and controlled additions of specialised inhibitor chemicals to ensure closed systems are maintained with maximum efficiency.

PRODUCTS & SERVICES - Pre-Commission Cleaning / Dosing and Control Equipment / Chemical Treatment Programmes / Pre-Treatment Plant Installation & Service / Training / On Site Test Equipment / Record Keeping Systems / Consultancy Services / Cleaning & Disinfection / Microbiological Sampling

LEGALISATION / STANDARDS - BISRIA, BS 6700 Rev 1, HVAC, Health & Safety at Work Act, COSHH, ISO 14001, ISO 18001, ISO 19001

## STEAM RAISING PLANT

A Steam Raising Plant that does not have correct water treatment can suffer from corrosion, scale deposition and sludge build up, leading to poor efficiency, and increased maintenance costs. To ensure that all parameters are maintained correctly Waterman Environmental Services provides a water treatment regime supported by services including regular monitoring, dosing, storage & control equipment and chemical cleaning.

PRODUCTS & SERVICES - Training / Record Keeping Systems / On Site Monitoring Kits / Monitoring & Consultancy Services / System Design / Chemical Cleaning Services / Dearation Equipment / Base Exchange Softening Plant / Reverse Osmosis Plant / Demineralisation Plant / Chemical Treatment Programmes / Chemical Delivery & Storage Systems / Dosing & Control Equipment / Plant Inspection Reports

LEGALISATION / STANDARDS - BS 2486 1978, Shell Boiler Makers Guide, Health & Safety at Work Act, COSHH, ISO 14001, ISO 18001, ISO 19001

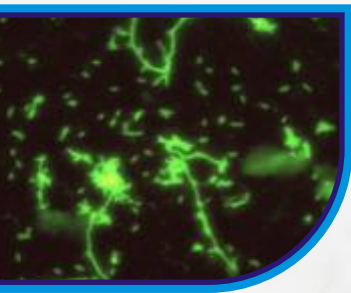


## RAW WATER CLARIFICATION / WASTE WATER EFFLUENT TREATMENT

The use of mains water can, for some high volume users & factory processes, be expensive. Similarly, the discharge of effluent or waste-water directly to a foul drain can incur high costs. Where drinking water quality is required, Waterman can install pre-treatment systems to bring any water up to the required quality. Where other potential water sources are available, Waterman Environmental Services are able to provide consultancy services, treatment equipment and treatment programmes, to significantly reduce water costs whilst achieving and maintaining the required water quality.

PRODUCTS & SERVICES - Pre -Treatment Plant / Clarification & Filtration Mixed Oxidant Systems / UV Light, Ozone, and Chlorine Dioxide / Coagulants and Flocculants / pH Correction Systems / Training / On Site Test Equipment / Record Keeping Systems / Consultancy Services / Cleaning & Disinfection / Microbiological Sampling / Mogden Formula Calculations / Return on Investment Modeling

LEGALISATION / STANDARDS - Drinking Water Standards, Health & Safety at Work Act, COSHH, ISO 14001, ISO 18001, ISO 19001



## LEGIONELLA RISK ASSESSMENT

The Health and Safety Commission in their document ACOP L8 state that any work place, trade or business premises where water is used should have a specific Legionella risk assessment. The employer, self employed person, or the landlord are required to ensure that the risk assessment is carried out by a competent person. Waterman Environmental Services have a team of dedicated specifically trained assessors. A document is produced detailing all water systems within a building, with schematic diagrams, a recommended control scheme, communication structure, plant inspection reports and remedial action recommendations.

PRODUCTS & SERVICES - Schematic Drawings / Photographs / Risk Assessment / Control Scheme / Training / Remedial Works Recommendations / Remedial Works Proposals / System Refurbishment / Low Risk System Design & Installation / Water Treatment Products & Services / Temperature Monitoring / Biocide Systems

LEGALISATION / STANDARDS - HSC - ACOP L8, Health & Safety at Work Act, COSHH, ISO 14001, ISO 18001, ISO 19001

**CALL US ON 0121 352 3700 TO FIND OUT HOW WE CAN HELP YOU**

WATERMAN ENVIRONMENTAL SERVICES LTD. UNIT 8D1, MAYBROOK BUSINESS PARK, MAYBROOK ROAD MINWORTH, SUTTON COLDFIELD, WEST MIDLANDS. B76 1AL  
TELEPHONE: 0121 352 3700 FAX: 0121 352 3722 EMAIL: [INFO@WATERMANENVIRONMENTAL.CO.UK](mailto:INFO@WATERMANENVIRONMENTAL.CO.UK) WEB: [WWW.WATERMANENVIRONMENTAL.CO.UK](http://WWW.WATERMANENVIRONMENTAL.CO.UK)